

Definite Purpose Contactors



DPBG12



DPBF09
DPBF12
DPBF18



DPBF26A
DPBF32A



DPBF50
DPBF65

Item #	Motor Full Load Amps (FLA) 600V	Locked Rotor Amps (LRA)			Resistive Load 600V	Maximum Horsepower						Type of termination
		240V	480V	600V		1 Phase		3 Phase		240V	480V	
	[A]	[A]	[A]	[A]	[A]	[HP]	[HP]	[HP]	[HP]	[HP]	[HP]	
Non-reversing three-pole definite purpose contactors, 600VAC.												
DPBG12 10 A①	14	84	84	84	20	3/4	2	3	3	10	10	Clamp-screw
DPBF09 10 A①	20	120	120	100	30	1 1/2	3	5	5	10	10	Clamp-screw
DPBF12 10 A①	25	150	150	125	30	2	3	5	5	10	15	Clamp-screw
DPBF18 10 A①	30	180	180	150	32	2	5	7 1/2	7 1/2	15	20	Clamp-screw
DPBF26 00 A①	40	240	240	200	50	3	7 1/2	10	10	30	30	Clamp-screw
DPBF32 00 A①	50	300	300	250	55	3	10	15	15	30	40	Clamp-screw
DPBF50 00①	70	420	420	350	100	5	15	20	25	50	50	Lug-clamp
DPBF65 00①	80	480	480	400	125	7 1/2	15	25	30	60	60	Lug-clamp
Accessory.												
BFX 8903	Metal screw-fixing plate for DPBF09-DPBF32 types											

① DPBG12, DPBF09, DPBF12 and DPBF18 are supplied with built-in 1NO auxiliary contact (SPST). Types with 1NC contact are also available; in the item #, replace digits "10" with "01". Complete item # with coil code from the table below:

Code	Voltage range
024 60	24VAC 60Hz
120 60	120VAC 60Hz
230 60	230VAC 60Hz
460 60	460VAC 60Hz

General characteristics

Ideal for air conditioning, heating, ventilation, refrigeration of HVACR industry, compressors, food and beverage industry. Main features:

- Motor FLA ratings at 600VAC: 14 to 80A
- Finger safe terminals
- Positive (force) guided contacts
- Up to four front or side mount auxiliary contacts
- Highly conductive auxiliary contacts
- Quick and simple installation for accessories
- Easy coil replacement
- Wide coil operating range.

Operating characteristics

- All types have undergone UL endurance tests of 250,000 cycles.
- Average coil consumption at 20°C/70°F:

	In rush	Holding
• DPBG12	25VA	4VA
• DPBF09-32	75VA	9VA
• DPBF50-65	220VA	18VA
- Built-in auxiliary contact ratings: A600 for all SPST, if any
- Screw termination:

	Torque	Wire size
• DPBG12	9lbin	AWG8-12
• DPBF09-18	13-16lbin	AWG8-16
• DPBF26-32	22-27lbin	AWG6-14
• DPBF50-65	44lbin	AWG14-2/0
- Operating temperature:
 - DPBG12: -40...+60°C/-40...+140°F
 - DPBF: -50...+70°C/-60...+160°F.

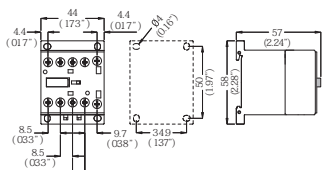
Certifications and compliance

Certifications: UL Listed for USA and Canada (cULus - File E93602) under Motor Controllers – Definite purpose contactors.

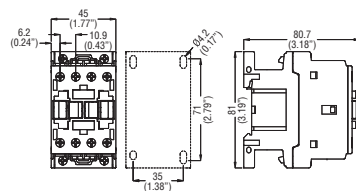
All contactors are CE marked per European Union requirements.

Compliant with standards: UL/CSA C22.2 n°60947-1, UL/CSA C22.2 n°60947-4-1, UL 508, CSA C22.2 n°14.

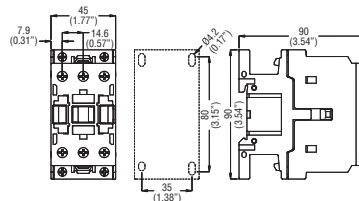
DIMENSIONS [mm (in)] Definite-purpose contactors DPBG12



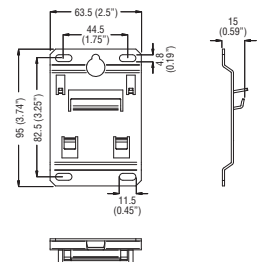
DPBF09-DPBF12-DPBF18



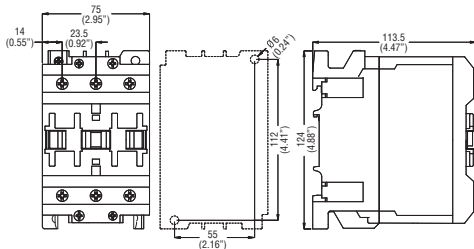
DPBF26-DPBF32



Fixing plate BFX8903



DPBF50-DPBF65



LOVATO ELECTRIC CORP.
3200 Jacques Bureau Avenue
Laval, Quebec H7P 0A9
CANADA

Tel.: 450 681-9200
Fax: 450 681-9884
E-mail: info@lovato.ca



Follow us on twitter
lovatocanada@lovatocanada1

www.Lovato.ca