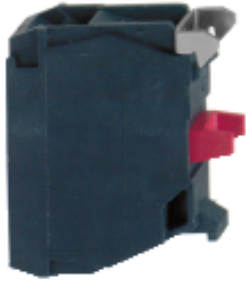


GS1AM101

Auxiliary contacts, TeSys GS, 1 NC, early break, front mounting, for GS2 with front/side handle



Main

Range of product	TeSys
Device short name	GS1AM
Product or component type	Auxiliary contact
Contact application	O, I and test position signalling
Range compatibility	TeSys GS fuse-switch disconnectors FuPact GS fuse-switch disconnectors
Contacts type and composition	1 NC
Contact operation	Early-break
[I _{th}] conventional free air thermal current	10 A (at 40 °C)
[I _e] rated operational current	6 A at 120 V AC-15 3 A at 240 V AC-15 1.8 A at 400 V AC-15 1.5 A at 480 V AC-15 2.8 A at 24 V DC-13 1.4 A at 48 V DC-13 0.55 A at 125 V DC-13 0.27 A at 250 V DC-13 0.15 A at 400 V DC-13



Complementary



Mechanical durability	5 Mcycles
Electrical durability	1 Mcycles AC-15
[I _n] rated current	30 A 32 A 50 A 60 A 63 A 100 A 125 A 160 A 200 A 250 A 315 A 400 A 600 A 630 A 800 A 1250 A
Fuse type	NFC DIN BS CC J
Type of operating handle	External frontal External right side External left side
Mounting location	Front face
Net weight	0.015 Kg

Packing Units

Package 1 Weight	0.013 Kg
Package 1 Height	0.150 Dm
Package 1 width	0.600 Dm
Package 1 Length	0.800 Dm

Offer Sustainability

REACH Regulation	 REACH Declaration
REACH free of SVHC	Yes
EU RoHS Directive	Compliant  EU RoHS Declaration
Toxic heavy metal free	Yes
Mercury free	Yes

RoHS exemption information	 Yes
China RoHS Regulation	 China RoHS Declaration

Contractual warranty

Warranty	18 months
----------	-----------

Product Life Status :	Commercialised
-----------------------	-----------------------